

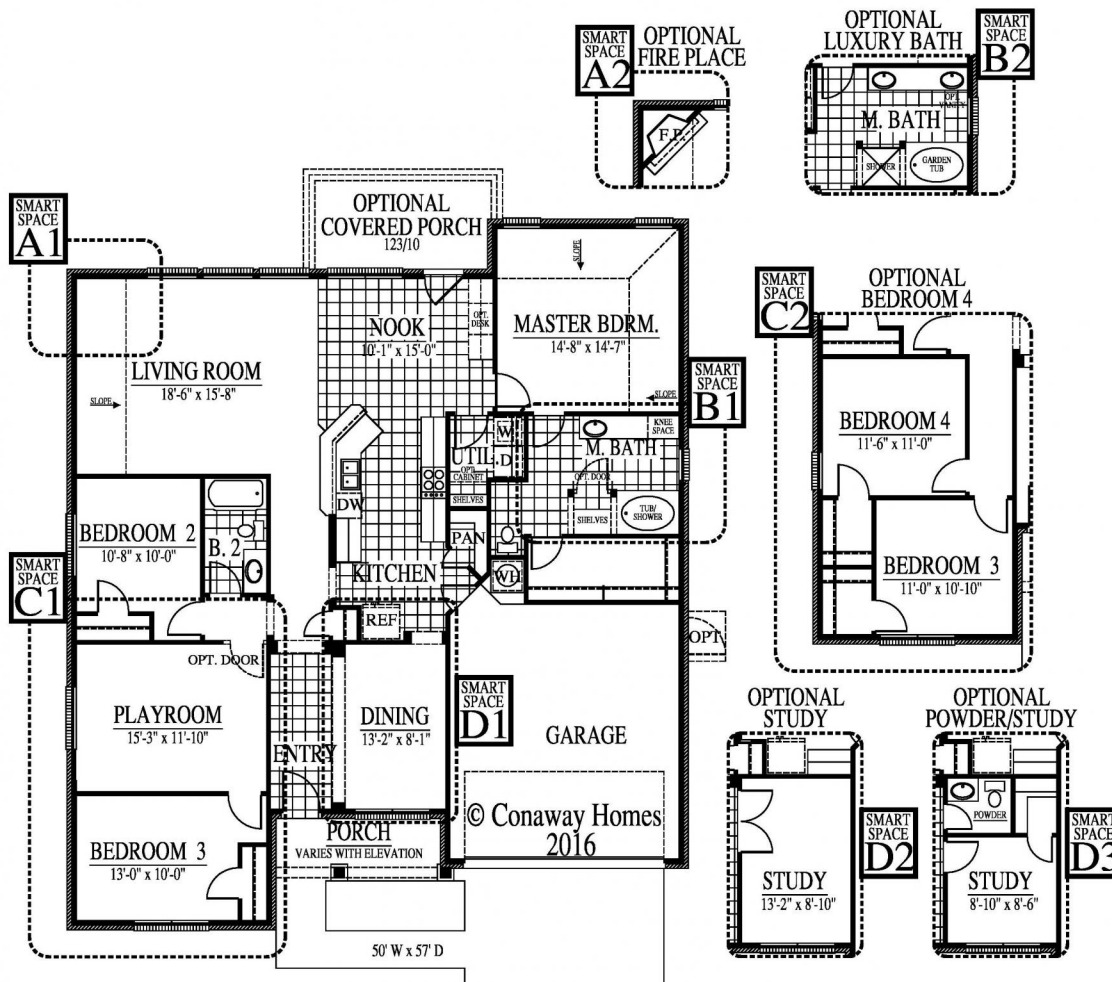


Available Home

Alpine Meadows in Longview

Experience is Everything™

Tucked away in a quiet pastureland just off of Alpine Road inside Loop 281, Alpine Meadows residents enjoy peaceful seclusion plus the convenience of an in-town neighborhood! Served by the highly acclaimed Hallsville I.S.D., Alpine Meadows is convenient to Longview's finest dining and shopping areas! But you'll appreciate the peace and privacy that Alpine Meadows offers!



Plan Features... 3-4* Bedrooms, 2 Bathrooms, 2 car garage Large welcoming front porch Entry with decorative archways Open Kitchen, Living, & Breakfast Room Smart Space Formal Dining / Study option Large Breakfast bar Oversized windows with exceptional back yard views Private Utility with extra storage space Large Master Bathroom with walk in closet SMART Space*(tm): 4th Bedroom / Study / Playroom options * Ask your new home Sales Counselor

Job #: 03-28-1916
 Address: 2500 Maggie Lane (Pipeline Notice Requirement)
 School District: Hallsville ISD
 Move in Date: Today



Hello, I'm Debbie Klaassen.
 Sales3@ConawayHomes.com
 903-704-0200
 530 E. Loop 281, Ste. 102
 Longview, TX 75605

