

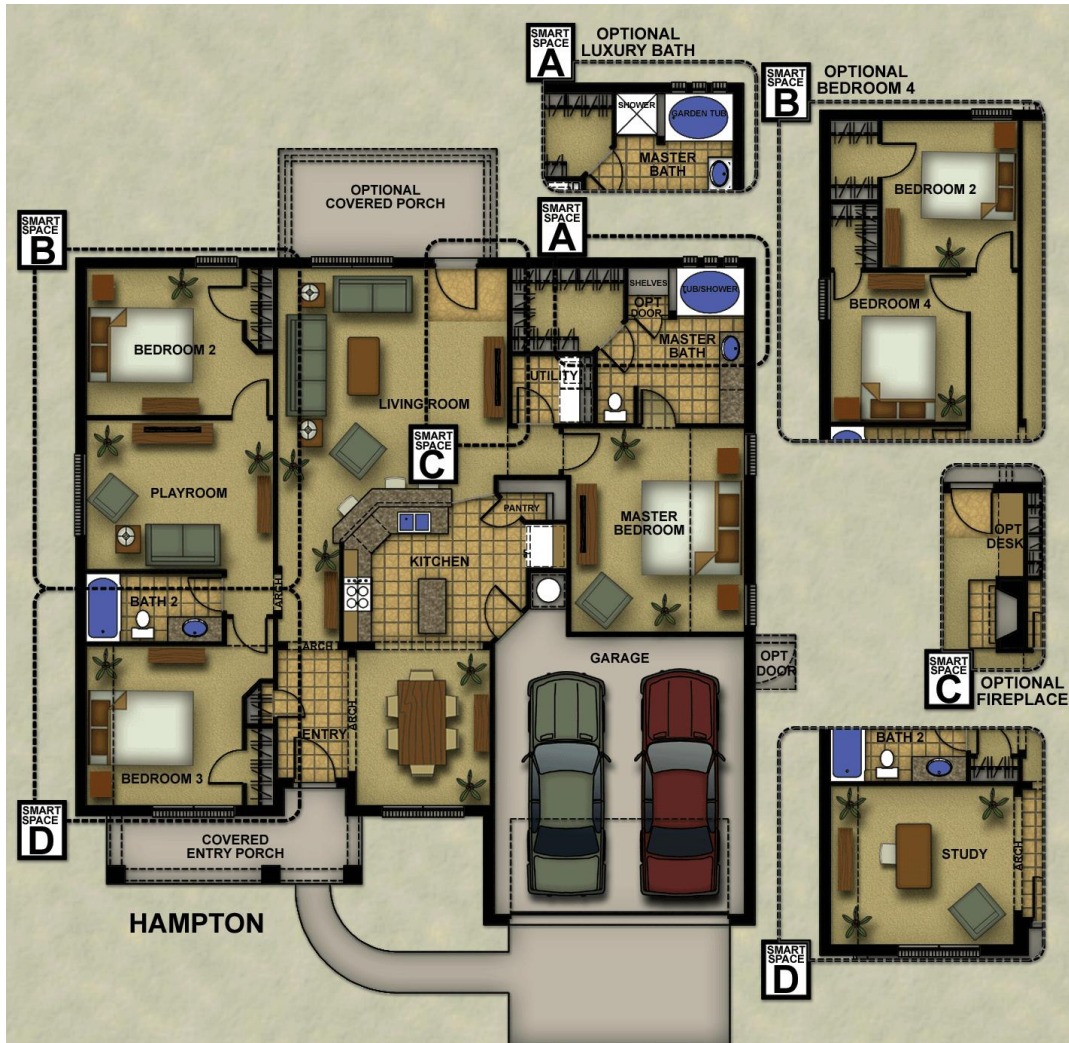


Your Home! Your Way!  
Conaway Homes!

# Quick Delivery Home

## Southridge in Jacksonville

Jacksonville's only master planned community! When you enter Southridge, you'll know you're in a special place. In Southridge, you'll find both Signature and Designer Series homes available in separate neighborhoods centered on a huge greenbelt and shady creek! Close to everything, but secluded from traffic and noise, Southridge is located just across from Nichols Green Park!



Need four bedrooms? How about three bedrooms and a separate study? You can have this versatility thanks to Conaway Homes' exclusive "Smart Space" which allows you to plan the home to fit your needs! You'll also have a formal dining area, kitchen with breakfast bar and huge pantry, separate Master Suite with large closet and more! This plan contains 2258 sq. ft. of total space with 1738 sq. ft. as living space.

Job #: 06-1526  
Address: 244 Crestview Drive  
School District: Jacksonville ISD  
Move in Date: Today



**Hello, I'm Charlotte Watson Bergami.**  
**How may I assist you?**  
**903-330-0007**  
**charlotte@conawayhomes.com**

