



Get WAY More. Live WAY Better.
Conaway Homes!

HLP-Wilscott Estates

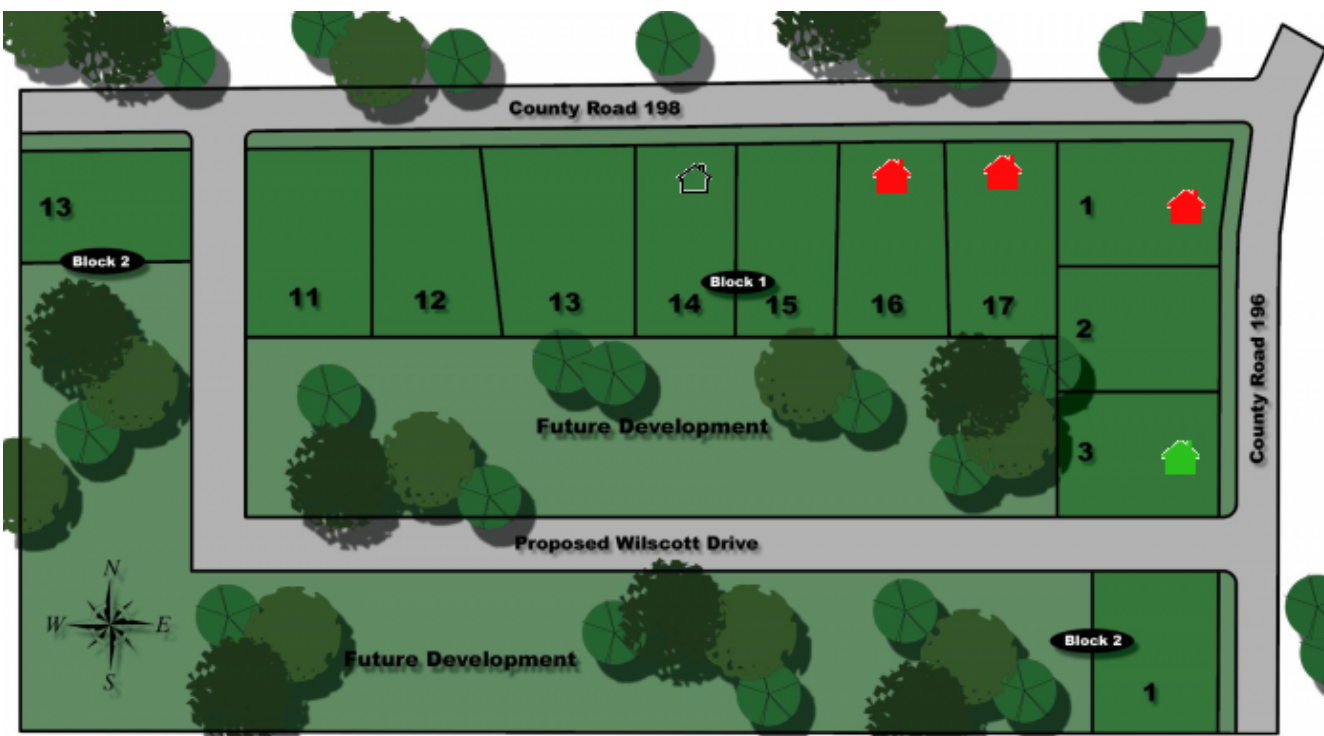
Tyler, TX ~ Tyler ISD

Wilscott Estates is in the historic and charming community known as Noonday. It represents the home and lifestyle that you yearn for, instinctively. Serene views, wide-open spaces, and cool breezes abound; also large lots, friendly neighbors and finely crafted homes. Residents of Wilscott may be close to Tyler shopping and dining via Loop 49 and those great TISD schools, but their hearts are really in the country.

Tyler, TX ~ Tyler ISD

As of 02-07-12 8:33 AM

Floor Plan	Layout	From
Easton - Belmont	3-4*/2/2	\$150,040
Edmond - Concord	3-4*/2/2	\$152,084
Fairfax	3-4*/2/2	\$156,812
Hartford - Roanoke	3-4*/2/2	\$175,130
Guthrie - Bellevue	3-4*/2/2	\$176,178
Jackson - Bradford	5/2.5/2	\$192,191
Joliet - Meridian	4-5*/2.5/2	\$196,720
Kerrville - Trenton	5/3.5/2	\$205,077



Hello, I'm Charlotte Watson Bergami.
How may I assist you?
903-330-0007
charlotte@conawayhomes.com

