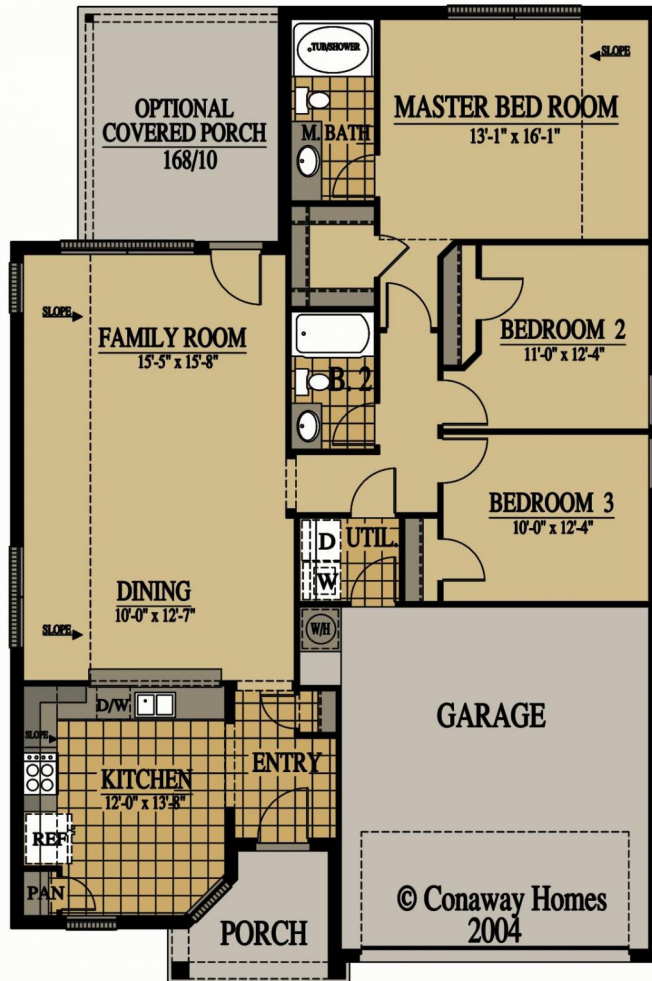




Your Home! Your Way!  
Conaway Homes!

**xWimberley**  
3 Bedroom / 2 Bath / 2 Car Garage

3 Bedroom, 2 Bathroom, 2 car garage Great Entry front porch feel Entry Hall with Archways to living Open Kitchen with breakfast table area Kitchen archway / servicing bar overlooking living Open Living / Dining with sloped ceilings Oversized double window overlooking patio Walk in Master closet Sloped 10" Master Bedroom ceiling Oversized Master Bedroom windows



### Available Elevations



Contact Us  
[info@conawayhomes.com](mailto:info@conawayhomes.com)  
1-855-CONAWAY (266-2929)

