

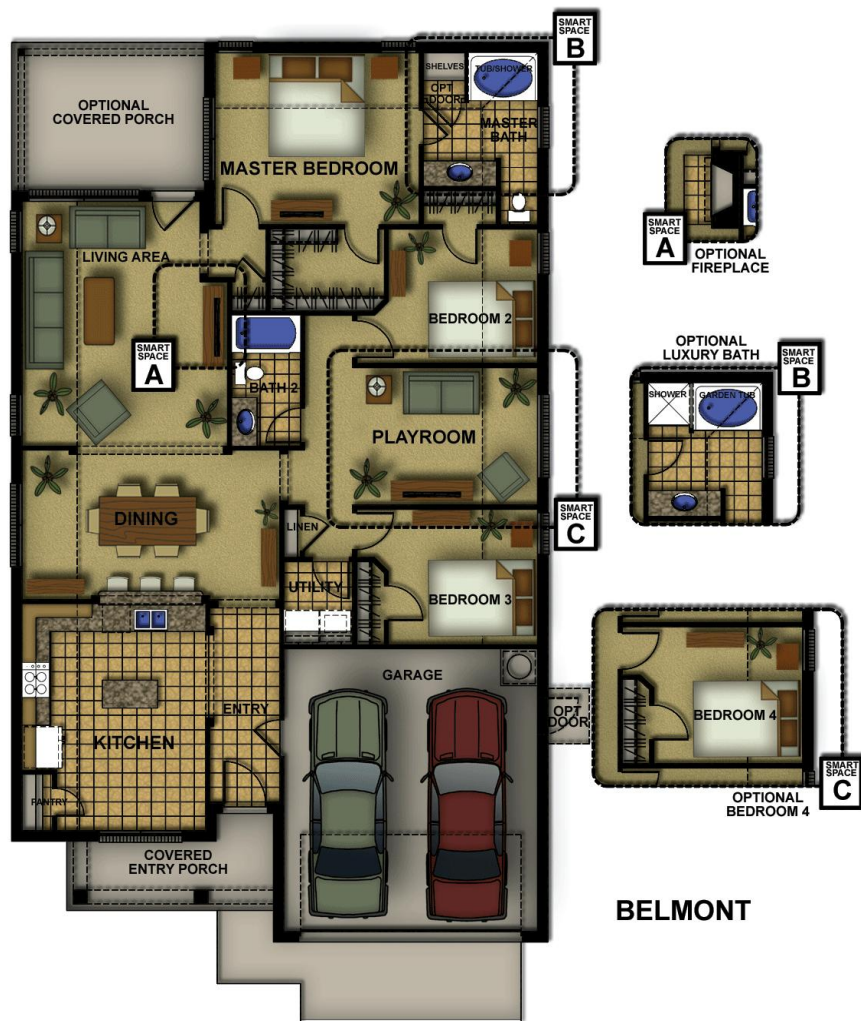


Get WAY More. Live WAY Better.
Conaway Homes!

Easton - Belmont

3-4* Bedroom / 2 Bath / 2 Car Garage

Plan Features... + 3-4* Bedrooms, 2 Bathrooms, 2 car garage + Expansive Entry with multiple archways + Kitchen with island, and Breakfast Nook + Convenient Kitchen / Garage location + Archway over Kitchen bar + Open Living, & Dining divided by archways + Private Utility Room + SMART Space*(tm):4th Bedroom / Study / Playroom options + Large Master Walk in closet + 10' ceilings in main living areas * Ask your New Home Specialist



BELMONT

Available Elevations



Contact Us
info@conawayhomes.com
1-855-CONAWAY (266-2929)

