

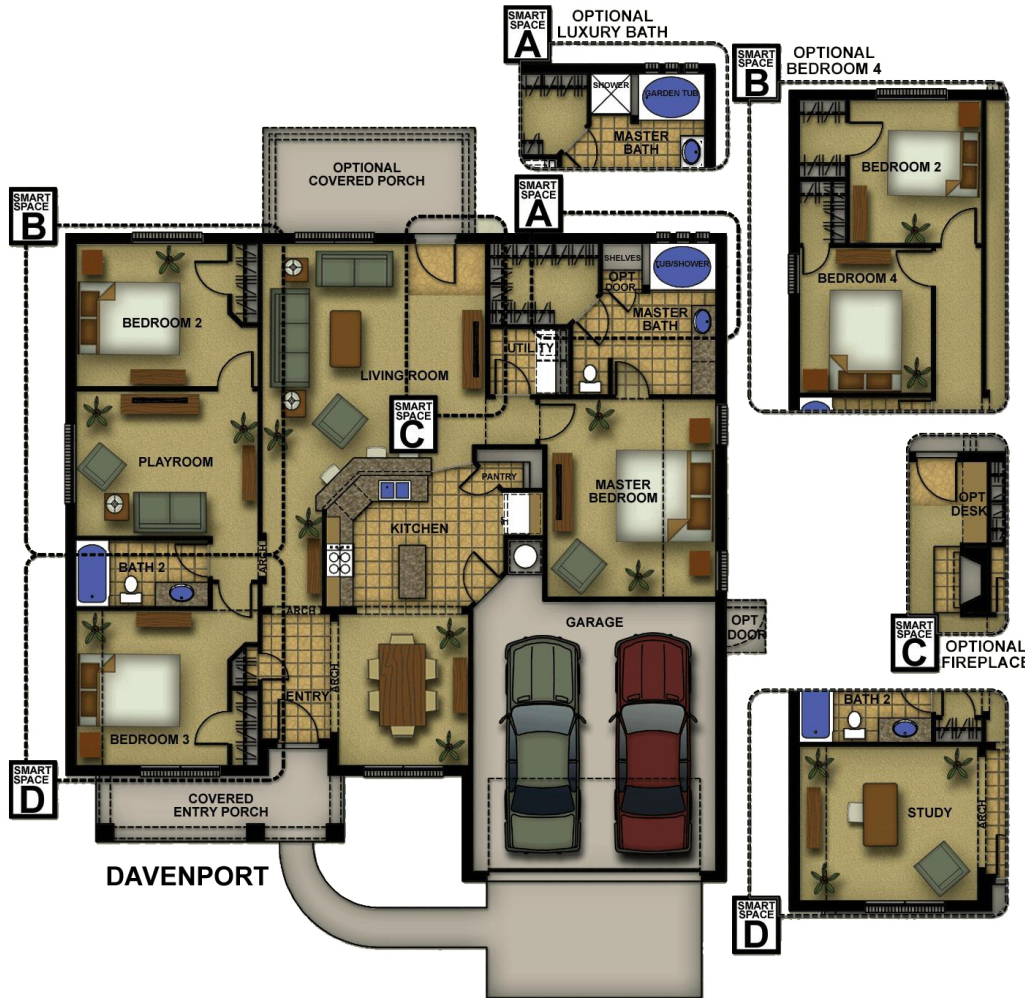


# Available Home

Meadows of Palmer in Palmer

Experience is Everything™

BUILD ON YOUR LAND - HIGHLIGHTS No Wheels Under Our Deals™ Built by hand on your land We cover 12,000+ square miles of East Texas Get a FREE Site evaluation \$0 down to qualified land owners Preferred lenders to help get you qualified Award winning management team Dedicated personal building team Several plans to choose from Personalize with available features Energy Efficient HERS Rated home Best value guarantee, plus much more... INCLUDED HOME FEATURES 3cm Granite Kitchen Countertops



Plan Features... 3-4\* Bedrooms, 2 Bathrooms, 2 car garage Split bedrooms Convenient Utility / Master Bedroom location Great views of front & backyard from Kitchen Decorative archways surround dining room Extra-large Pantry Kitchen island, & Kitchen bar top Ultra convenient Kitchen / Garage location Large Master closet SMART Space\*(tm): 4th Bedroom / Study / Playroom options Ask your new home Sales Counselor\*

Job #: 2371-EL-C1  
 Address: 421 Palmer View Drive  
 School District: BOYL - ISD Varies  
 Move in Date: Today



**Hello, I'm Brenda Dillehay.**  
**Sales1@ConawayHomes.com**  
**972-564-8009**  
**6110 Farm to Market Road 1565**  
**Royse City, TX 75189**

