

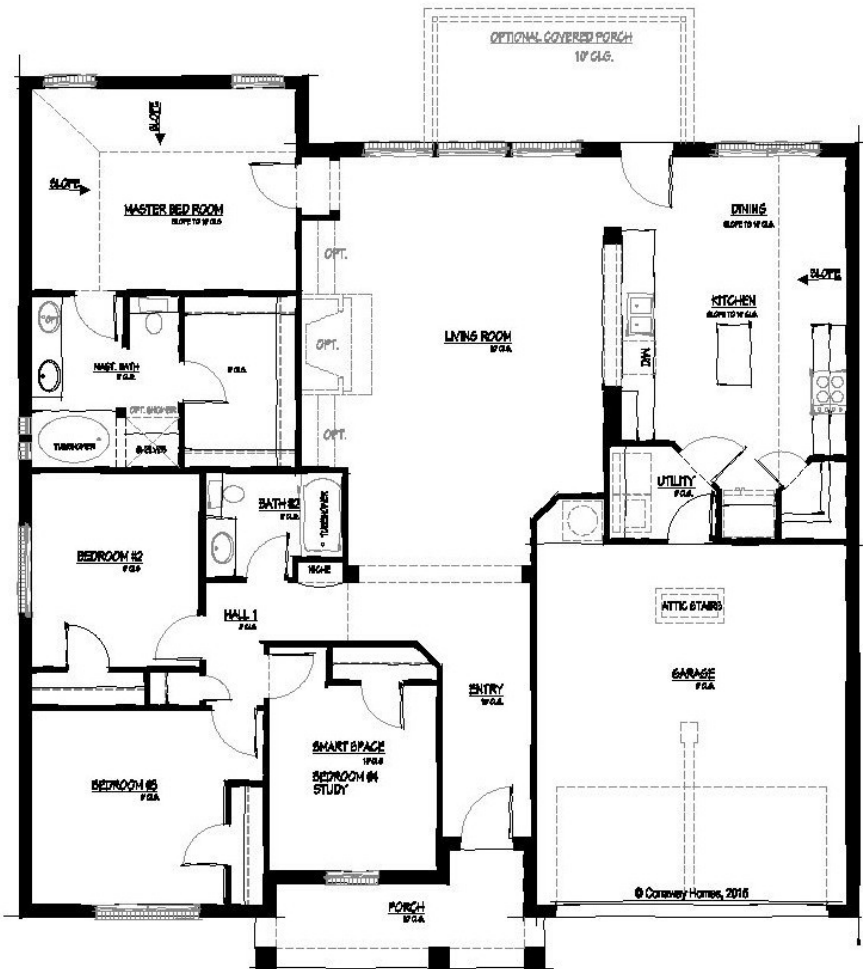


Available Home

Meadows of Palmer in Palmer

Experience is Everything™

BUILD ON YOUR LAND - HIGHLIGHTS No Wheels Under Our Deals™ Built by hand on your land We cover 12,000+ square miles of East Texas Get a FREE Site evaluation \$0 down to qualified land owners Preferred lenders to help get you qualified Award winning management team Dedicated personal building team Several plans to choose from Personalize with available features Energy Efficient HERS Rated home Best value guarantee, plus much more... INCLUDED HOME FEATURES 3cm Granite Kitchen Countertops



Plan Features... 3-4* Bedrooms, 2 Bathrooms, 2 car garage Extremely livable & comfortable design Nice sized Kitchen with bar top & island Oversized Pantry Archways divide Kitchen & Living Convenient Kitchen / Garage location Split bedroom arrangement SMART Space*(tm): 4th Bedroom / Study option Large Entry with decorative archway Huge Master Closet Ask your new home Sales Counselor*

Job #: 2372-EL-C1
Address: 431 Palmer View Drive
School District: BOYL - ISD Varies
Move in Date: Today



Hello, I'm Brenda Dillehay.
Sales1@ConawayHomes.com
972-564-8009
6110 Farm to Market Road 1565
Royse City, TX 75189

