

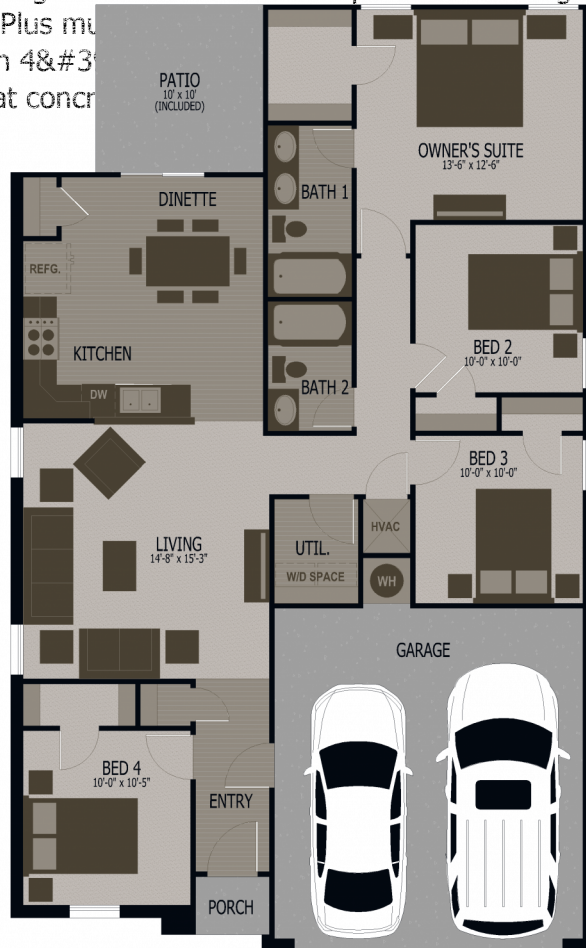


Available Home

Mission Creek in Longview

Experience is Everything™

You'll love living in this intimate neighborhood. Featuring new homes near Hallsville schools, Mission Creek has a great Longview location - everything is minutes away! Neighborhood amenities include curbed & guttered streets, city sewer & water utilities, and access to highly acclaimed Hallsville ISD. In addition, there's easy access to Loop 281, dining & shopping. MISSION CREEK - HIGHLIGHTS Great Longview location Easy access to loop 281, dining & shopping Curbed & guttered streets City sewer & water utilities Highly acclaimed Hallsville ISD Preferred lenders to help get you qualified Award winning management team Dedicated personal building team Several plans to choose from Personalize with available features Energy Efficient HERS Rated home Plus much more (back) Full privacy fence with 4" & 3" gutters with downspouts Flat concrete driveway 3cm Granite Kitchen Countertop Automatic sprinkler system Decorative 1" specific requirement



©Vision Homes BERGMAN-R



BERGMAN - AR

No Wheels Under Our Deals (TM) Site built by Vision Homes Solid concrete foundation & raised ceilings throughout Moisture controlling house wrap HERS rated energy efficient home Low-E, tilt-sash vinyl windows R-32 insulated ceilings Energy saving appliances 14 SEER air conditioning unit 1, 2 & 10 year builder warranty Plus much more...

Job #: 2385-27-V3
 Address: 1433 Santa Cruz Drive
 School District: Hallsville ISD
 Move in Date: Today



Hello, I'm Rick Oliver.
Sales2@conawayhomes.com
530 SH Loop 281
Longview, TX 75601

