

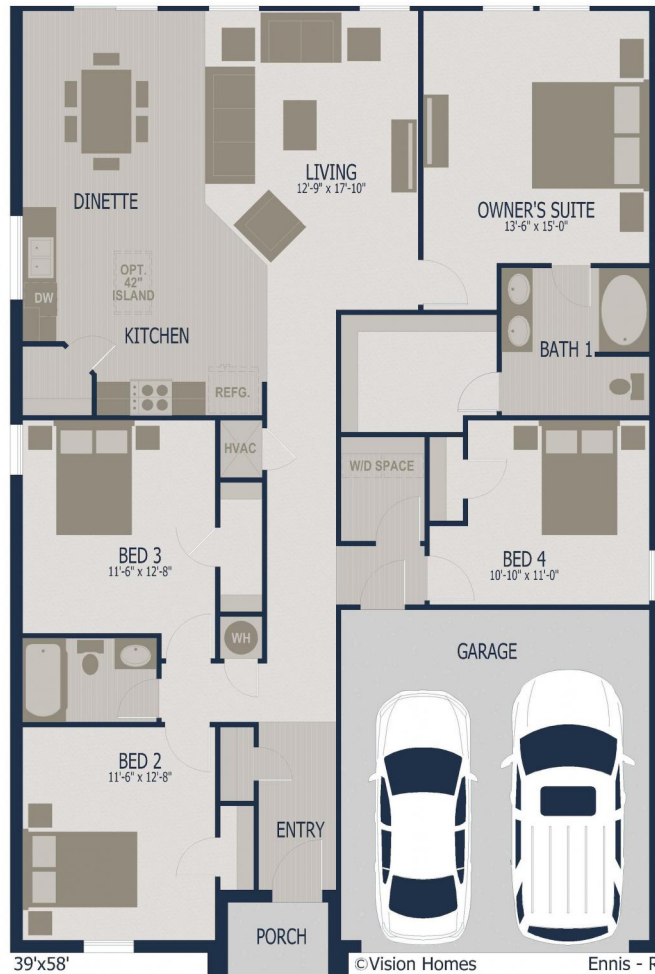


Available Home

Ray Creek in Longview

Experience is Everything™

Have you seen Ray Creek, new construction homes for sale in Longview, TX? Its great location, on Judson Rd., north of Loop 281, offers easy access to dining & shopping. The cozy homes are on nice sized homesites, with 10x10 concrete patios. Neighborhood amenities include curbed & guttered streets, city sewer & water utilities, and access to the highly acclaimed Longview ISD. RAY CREEK - HIGHLIGHTS Great Longview location Easy access to loop 281, dining & shopping Curbed & guttered streets City sewer & water utilities Highly acclaimed Longview ISD Preferred lenders to help get you qualified Award winning management team Dedicated personal building team Several plans to choose from Personalize with available features Energy Efficient yard (front, sides & landscaping Full house



FEATURES 3cm Granite Kit
 I digital automatic sprinkler
 e driveways, & sidewalks A



No Wheels Under Our Deals (TM) Site built by Vision Homes Solid concrete foundation 9' raised ceilings throughout Moisture controlling house wrap HERS rated energy efficient home Low-E, tilt-sash vinyl windows R-32 insulated ceilings Energy saving appliances 14 SEER air conditioning unit 1, 2 & 10 year builder warranty Plus much more...

Job #: 2498-24-V3
 Address: 413 Claire Ln.
 School District: Longview ISD
 Move in Date: 01-27-22



Hello, I'm Rick Oliver.
Sales2@conawayhomes.com
530 SH Loop 281
Longview, TX 75601

