

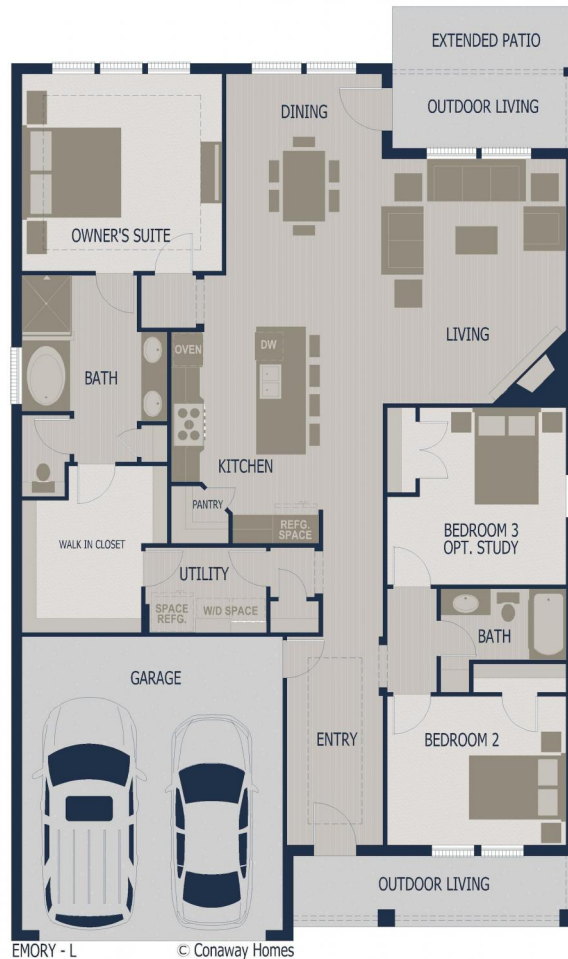


*Experience is Everything™*

# Available Home

## Boyd Addition in Chandler

Great country feel in a quiet corner of Chandler & located in Brownsboro ISD. The .25 acres to .5 acres lots offer easy access to HWY 31, grocery stores and restaurants. Perfect for a family who wants the feel of being in the country while having all of the conveniences that Chandler has to offer. There are only a few new home opportunities available. **BOYD ADDITION - HIGHLIGHTS** Great country location in Chandler! Easy access to HWY 31 & close to Lake Palestine! Oversized lots! Highly acclaimed Brownsboro ISD Preferred lenders to help get you qualified Award winning management team Dedicated personal building team Several plans to choose from Personalize with available features Energy efficient HEERS rated home Plus much more! Lights on Front Elevation backyard sod included driveways, & sidewalks



Personalize with available features Energy efficient HEERS rated home technology 3cm Gr ed yard (front, & side yard: sod area) Decorative front uments



Plan Features... 3 Bedrooms, 2 Bathrooms, 2 car garage Open Kitchen with oversized island Open Kitchen, Living, & Dining Room Oversized windows with exceptional back yard views Private Utility Large Master Bathroom with walk in closet Ask your new home Sales Counselor\*

Job #: 2533-33-C2  
Address: 652 Noonday Road  
School District: Brownsboro ISD  
Move in Date: Today



**Hello, I'm Letitia Horace.**  
**letitiah@conaways.com**  
**903-871-5555**  
**101 Business Park Dr.**  
**Whitehouse, TX 75791**

