

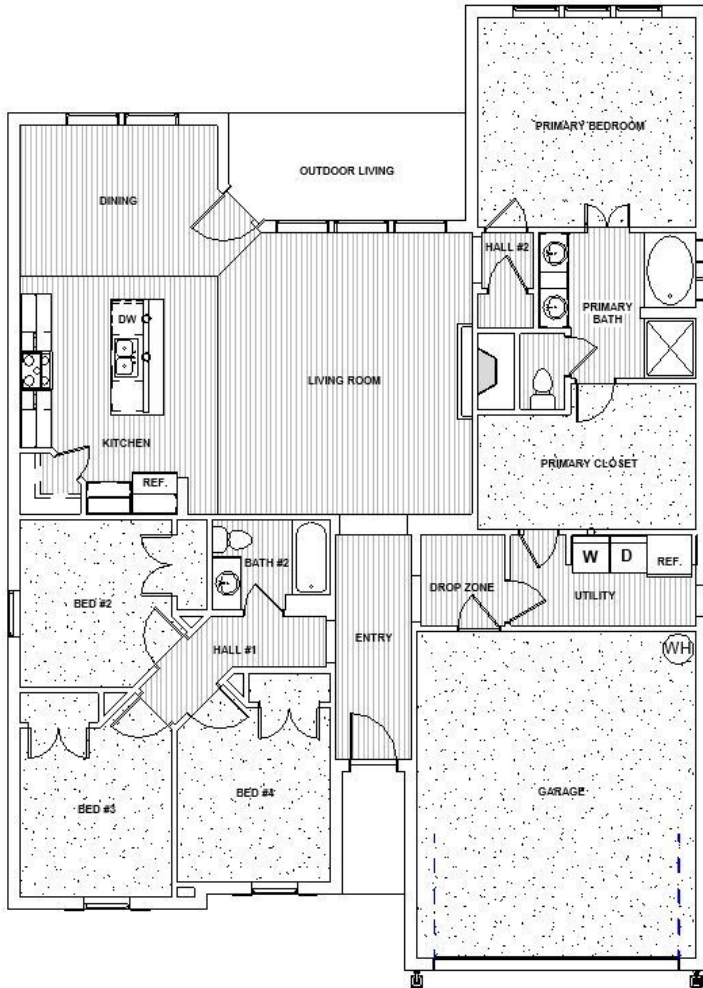


# Available Home

## Turtle Creek Ranch in Flint

Experience is Everything™

This is your family's chance to live in one of the Tyler area's most sought-after communities. Beautiful new homes in Noonday, TX, on oversized 3/4 acre lots highlight the great country location. Easy access to Loop 49 & TX 155 make this neighborhood stand out, as does its convenient location in the highly acclaimed Tyler ISD. A variety of designs and floorplans just add to the desirability of this neighborhood. **TURTLE CREEK ESTATES - HIGHLIGHTS** Great country location next to Noonday! Easy access to Loop 49, & TX 155! Oversized 3/4 acre lots! Highly acclaimed Tyler ISD Preferred lenders to help get you qualified. Award winning management team. Dedicated personal building team. Several plans to choose from. Personalize with available options. More... INCLUDED HOME FEATURES 3cm Granite Kitchen Countertops. Decorative tile backsplash. Large island with breakfast bar. Side entry (front or back of home) with 30" x 39" front entry gate. Side yard with 30" x 39" sod area. Partial privacy fence with 4" x 39" front entry gate. Side yard with 30" x 39" sod area. Plus many other great details. All other site specific requirements.



**Hello, I'm Rick Oliver.**  
**Sales2@conawayhomes.com**  
**530 SH Loop 281**  
**Longview, TX 75601**