



Turtle Creek Ranch

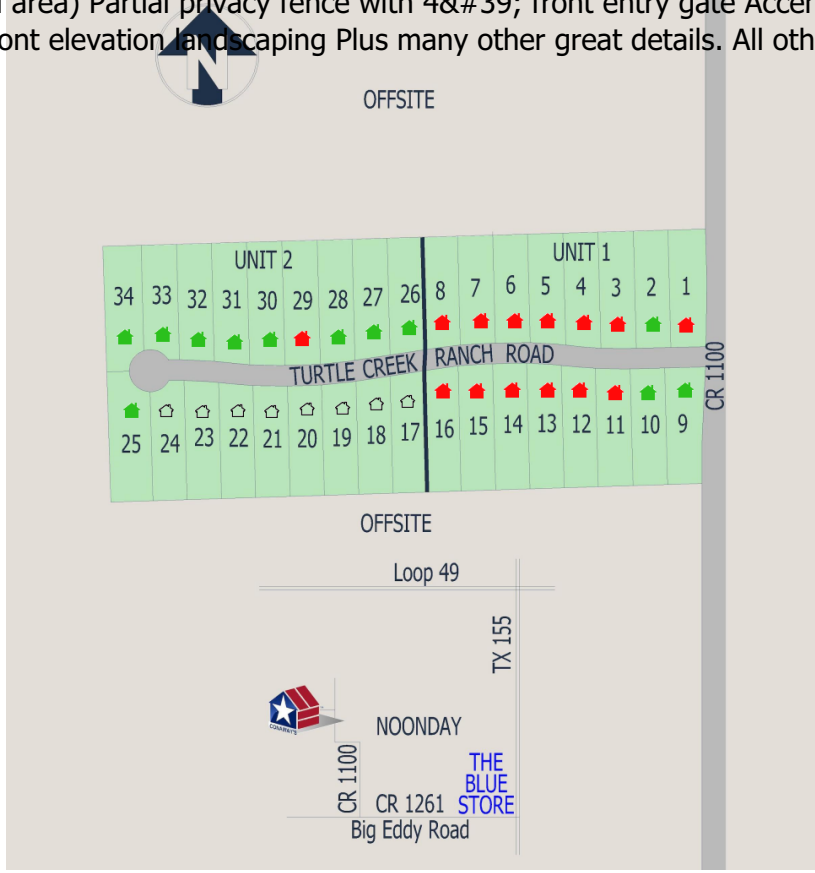
Experience is Everything™

Flint, TX ~ Tyler ISD
From \$369,990

This is your family's chance to live in one of the Tyler area's most sought-after communities. Beautiful new homes in Noonday, TX, on oversized 3/4 acre lots highlight the great country location. Easy access to Loop 49 & TX 155 make this neighborhood stand out, as does its convenient location in the highly acclaimed Tyler ISD. A variety of designs and floorplans just add to the desirability of this neighborhood. **TURTLE CREEK ESTATES - HIGHLIGHTS** Great country location next to Noonday! Easy access to Loop 49, & TX 155! Oversized 3/4 acre lots! Highly acclaimed Tyler ISD Preferred lenders to help get you qualified Award winning management team Dedicated personal building team Several plans to choose from Personalize with available features Energy efficient HERS rated home Plus much more... **INCLUDED HOME FEATURES** Fully Connected with smart home technology 3cm Granite Kitchen Countertops Decorative Up Lights on Front Elevations Gutters & downspouts on front elevation Upgraded 30 year shingles Bermuda sodded yard (front, & side yards Bermuda Sod (30' from back of home) Automatic Sprinkler System (covering up to 10,000 sq.ft. of sod area) Partial privacy fence with 4' front entry gate Accented front elevation uplighting Side fencing to 50' from back of home Decorative front elevation landscaping Plus many other great details. All other site specific requirements

From \$369,990
As of 06-01-23 11:15 AM

Floor Plan	Layout	From
S5 Plan	3-4/2/2	\$369,990
S7 Plan	4/2/2	\$374,990
S8 Plan	4/2/2	\$379,990
S4 Plan - 2 Story	5/3/2	\$409,990
S5 Plan - 2 Story	5/3/2	\$414,990
S6 Plan - 2 Story	5/3/2	\$424,990



Hello, I'm Letitia Horace.
letitiah@conaways.com
903-871-5555
101 Business Park Dr.
Whitehouse, TX 75791

