

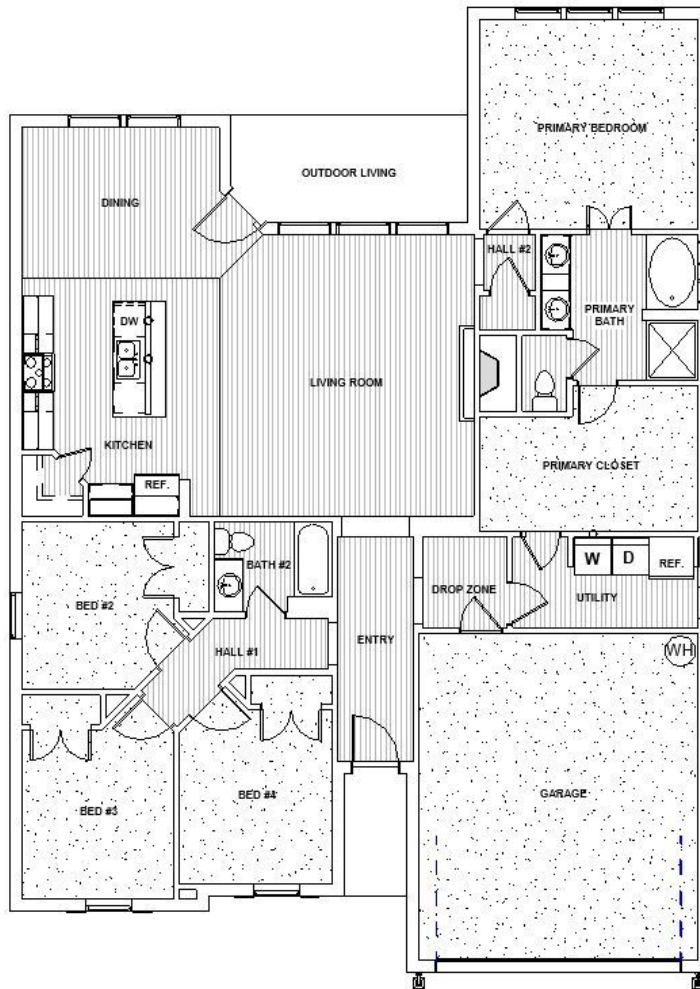


# S7 Plan

Experience is Everything™

**4 Bedroom / 2 Bath / 2 Car Garage**  
**1,990 sqft. Heated & Cooled / 2,562 sqft. Under Roof**

This is modern living at its finest! The open floorplan gives you instant access to the living room, dining room and kitchen. The primary suite is just off the living room, and includes a separate tub and shower, and a large walk-in closet. The three additional bedrooms have their own bath, and are grouped together at the front of the home. The drop zone and utility room are easily accessed from the garage. This plan also includes a 2-car garage and a rear patio.



## Available Elevations



S7 - AR



S7 - BR



S7 - CR

**Contact Us**  
**info@conawayhomes.com**  
**903-600-5000**

